

# 1500AJP

ULTRA SERIES BOOM LIFT



## Performance

Platform Height	150 ft	45.72 m
Horizontal Outreach	75 ft	22.86 m
Up and Over Height	60 ft	18.29 m
Swing	360° Continuous	
Platform Capacity-Restricted	1,000 lb	454 kg
Platform Capacity-Unrestricted	600 lb	272 kg
Platform Rotator	180° Hydraulic	
Jib Length	8 ft	2.4 m
Jib Range of Articulation	130° (+75, -55)	
Jib Horizontal Rotation	125° (55 right, 70 left)	
Weight <sup>1</sup>	57,400 lb	26,039 kg
Max. Ground Bearing Pressure	120 psi	83.7 kg/cm <sup>2</sup>
Drive Speed	2.8 mph	4.5 km/h
Gradeability	40%	
Turning Radius (Inside)		
Axles Retracted	23 ft 4 in.	7.12 m
Axles Extended	7 ft 6 in.	2.3 m
Turning Radius (Outside)		
Axles Retracted	31 ft 3 in.	9.52 m
Axles Extended	21 ft 8 in.	6.6 m
Tailswing		
Tower up	0	
Tower down	8 ft 2 in.	2.49 m

## Standard Specifications

### Power Source

Diesel Engine		
Deutz TCD 3.6L Tier IV F	99.8 hp	74.4 kW
Fuel Tank Capacity	45 gal	170 L

### Hydraulic System

Hydraulic Tank Capacity	93 gal	352 L
-------------------------	--------	-------

### Tires

Standard	44S/50D/10 24 ply Foam-Filled
----------	-------------------------------

## Standard Features

- Articulating Jib
- Dual Rated Capacities (600/1,000 lb)
- Drive-Out Extendable Axles
- 180° Hydraulic Platform Rotator
- AC Receptacle in Platform
- Tilt Light and Alarm
- Swing-Out Engine Tray
- 12V-DC Auxiliary Power
- Hourmeter
- Control ADE\* System
- Hydrostatic Drive
- Proportional Controls
- SkyGuard\*
- Dual USB Power Outlet
- Gull-Wing Steel Hoods
- 44S/50D/10 Foam-Filled Rim Protector Lug Tread Tires
- Platform Console Machine Status Light Panel<sup>2</sup>
- Lifting/Tie Down Lugs
- Engine Distress Warning/Shutdown—Selectable via JLG Analyzer
- All Motion Alarm
- LCD Panel at Operator's Platform Control Console
- Quick Stik\*
- Load Sensing System (LSS)



## Accessories & Options

- 36 x 72 in. (91 x 1.83 m) Platform
- Inward Self-Closing Swing Gate
- Mesh to Top Rail-Bolt-on Aluminum 6 ft<sup>1</sup>
- Mesh to Top Rail-Bolt-on Aluminum 8 ft<sup>1</sup>
- Light Package<sup>3</sup>
- Soft Touch System
- Cold Weather Start Kit<sup>4</sup>
- Hostile Environment Kit<sup>5</sup>
- Flashing Amber Beacon
- Cold Package Plus<sup>6</sup>
- Fall Arrest Platform
- Tool Tray
- Special Hydraulic Oils
- Accessory Packages:
  - SkyAir\*
  - SkyWelder\*
  - SkyGlazier\*
  - SkyCutter\*
  - Pipe Rack
  - SkyPower\* Package — 7500 Watt Generator Power Cable to Platform

1. Certain options or country standards increase weight.
2. Provides indicator lights at platform control console for system distress, fuel level, low fuel, 5 degree tilt light and foot switch status.
3. Includes platform mounted worklights and drive/backup lights.
4. Includes engine block heater, battery heater and oil tank heater.
5. Includes console cover, boom wipers and cylinder bellows.
6. Includes extreme cold engine oil, fuel conditioner, engine block heater, battery blanket, glow plugs, hydraulic tank heater, oversized footswitch and arctic hydraulic oil priced separately.
7. Not available in all markets.

1



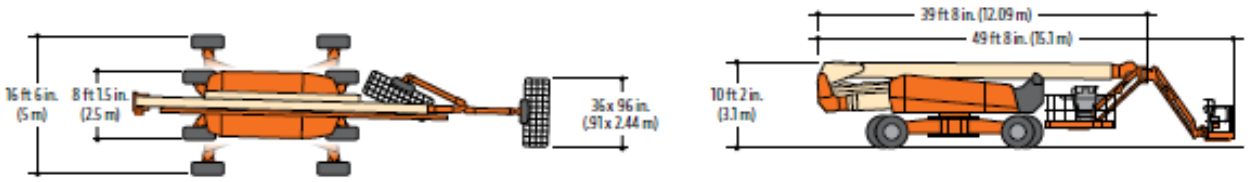
# 1500AJP

ULTRA SERIES BOOM LIFT

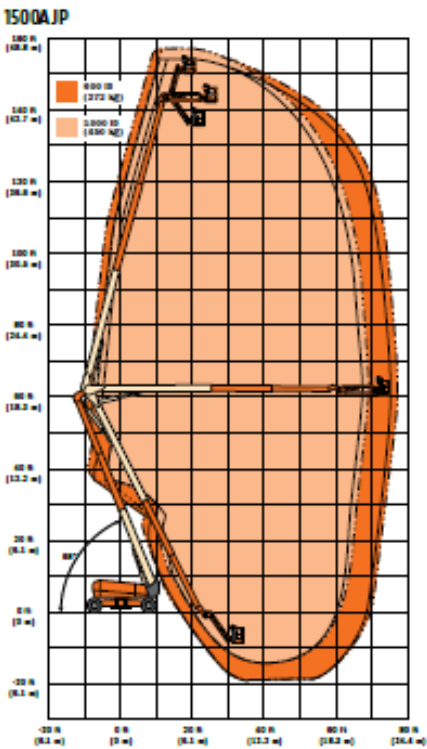


**Dimensions**

All dimensions are approximate.



**Reach Diagram**



2

