

Model
1500SJ
TELESCOPIC BOOM LIFTS



MORE ECONOMIC

- Lower hydrocarbon, carbon monoxide, particulate and NOx emissions with Stage IIIB-compliant engine.

MORE PRODUCTIVE

- 40% gradeability for improved go-anywhere mobility around jobsites.

MORE ACCESS

- Dual capacity and class-leading reach in every direction.

SMART DESIGN

- Fewer buttons and switches used to position the platform and less time spent learning to use the platform controls.



Standard Features

- 0.91 m x 2.44 m low mount platform
- Side entry with drop bar mid rail
- Multiple function operation
- Full proportional drive joystick control with integral thumb steer switch
- Full proportional main boom and swing joystick control
- Multiple speed control for telescope and platform rotate
- 2.44m articulating jib
- 4,6 m to 7,6 m Telescoping jib
- Powered side stow on jib
- 180 degree powered platform rotator
- Platform console machine status light panel ¹
- Load sensing system
- AC cable to platform
- Gull-wing hoods
- Swing-out engine tray
- Spark arresting type muffler
- Control ADE² (Advanced Design Electronic) System
- Hydrostatic drive transmission
- Four wheel drive
- Four wheel steer/two wheel steer/crab steer
- Hom
- Selectable dual platform capacity system (230kg/450kg)
- Drive-out extending axles
- 4 degree tilt alarm and indicator light
- Oscillating front axle
- Lifting/tie down lugs
- Hour meter
- Ground control selector switch with key lock
- Load sensing hydraulics
- Platform tool tray
- 12V DC auxiliary power
- Engine distress warning/shut down system ²
- Selectable creep speed on drive / lift and swing functions
- JLG Skyguard active system

¹ Provides indicator lights at platform control console for system distress, low fuel, 5 degree tilt light, and foot switch status.

Standard Specifications

Power Source	
• Diesel Engine - Deutz TCD2.9 L4	55.4 KW
• Fuel Tank Capacity	117 L
Hydraulic System	
• Hydraulic System	250L
• Auxiliary Power	12V DC
Tyres	
• Tyres	445/50D710 Foam Filled

¹ Low roll pressure and high coefficient of friction elements with skid-to-ride capability facilitated by an engine.

² Available when integrated with the SkyPower[®] package.

³ Consists of six 40-Watt lights, four telescopic mounted lights and two platform mounted lights.

⁴ Includes all-motion alarm and flashing amber beacon.

⁵ Includes platform mounted work lights and head beam lights.

⁶ Includes console cover, boom wipers and cylinder blowers.

Accessories & Options

- 0.91 m x 1.83 m slide bar side entry platform
- 0.91 m x 1.83 m Self closing inward swing gate
- 13 mm air line to platform
- SkyPower[®] package 7,500 watt on-board generator
- SkyWelder[®] package 250 amp welder in the platform ³
- SkyGazler[®] package glass and panel tray
- Nite-Bright[®] package ⁴
- All motion alarm
- Light package ⁵
- Flashing amber beacon
- Euro Plug & Socket
- Hostile environment kit ⁷
- Hydraulic oil cooler
- Spark Arrestor Muffler
- Soft Touch 0.91 m x 1.83 m Platform Proximity System
- Soft Touch 0.91 m x 2.44 m Platform Proximity System
- Skyguard beacon (ILOS)
- Pipe racks
- Arctic package
- On-board 4000W generator
- Generator hourmeter
- Synthetic Biodegradable Hydraulic Oil
- Platform worklights
- Head & Tail Lights
- Special paint colour
- 445/65-24 Solid Tyres



Model 1500SJ TELESCOPIC BOOM LIFTS

Performance

- Working Height 47.72 m
- Working Outreach 25.03 m
- Swing (Continuous) 360°
- Platform Capacity
 - Restricted 450 kg
 - Unrestricted 230 kg
- Platform Rotator (Hydraulic) 180°
- Jib - Telescope: retracted 4.62 m
- Jib - Telescope: extended 7.62 m
- Jib - Range of articulation 120° Vertical (+75°/-45°)
 - A. Platform Size 0.91 m x 2.44 m
 - B¹: Overall Width (Axles Retracted) 2.49 m
 - B²: Overall Width (Axles Extended) 3.81 m
 - C. Tailswing (working condition) 1.68 m
 - D. Stowed Height 3.05 m
 - E¹: Stowed Length 18.82 m
 - E²: Transport length 13.11 m
 - F. Wheelbase 3.81 m
 - G. Ground Clearance 0.30 m
- Machine weight ^{1,2} 22,000 kg
- Maximum Ground Bearing Pressure ² 7.95 kg/cm²
- Drive Speed 4.8 km/h
- Gradeability 40%
- Axle Oscillation 0.30 m
- Turning Radius - Inside (Axles Retracted) 4.39 m
- Turning Radius - Outside (Axles Retracted) 6.86 m

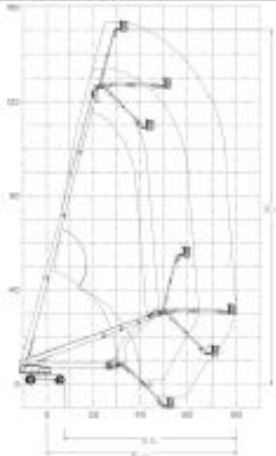
¹ Certain options or country standards may increase weight and/or dimensions.

² With Standard tires



2

Reach Diagram



Dimensions

