

ROUGH TERRAIN TELESCOPIC BOOMS



H43 TPX

Performance

- 42.2 m working height
- 19.9 m maximum outreach
- Load capacity:
230 kg (2 persons) /
450 kg (3 persons)
- 2 axis jib rotation, 150°
horizontal and 140° vertical

Productivity

- Strong, quick and maneuverable boom
- Compact and easy to transport
- Faster lifting to full height
- Unequaled all terrain capabilities

Easy to use

- Continuous movement control
- Continuous outreach control
- Smooth and precise controls



Haulotte 
GROUP

More than lifting

www.haulotte.com

1



H43 TPX

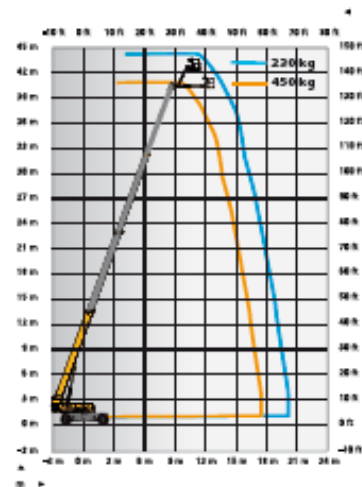
ROUGH TERRAIN TELESCOPIC BOOMS



TECHNICAL DATA

H43 TPX

Working height	42.2 m
Platform height	40.2 m
Horizontal outreach	19.9 m
Lift capacity	230 - 450 kg
F x G Platform size	2.44 x 0.8 m
H Length - stowed	14.5 m
A Length - storage	12.3 m
B Width	2.53 m
Width - with extended axles	3.3 m
C Height - stowed	3.05 m
Vertical jib rotation	140° (+70/-70)
Platform rotation	174° (+87/-87)
Boom rotation angle	73° (+73/-0)
Turntable rotation	360°
Tailswing	150 cm
D Wheelbase	3.5 m
E Ground clearance	38 cm
Tilt	3°
Drive speed	0.3 - 5 km/h
Gradeability	40 %
Turning radius - outside	5.74 m
Tires - foam-filled	445/65-22.5
Engine	55.5 kW - 75.4 hp (Europe) / 62.4 kW - 84.9 hp (outside Europe)
Weight	20600 kg

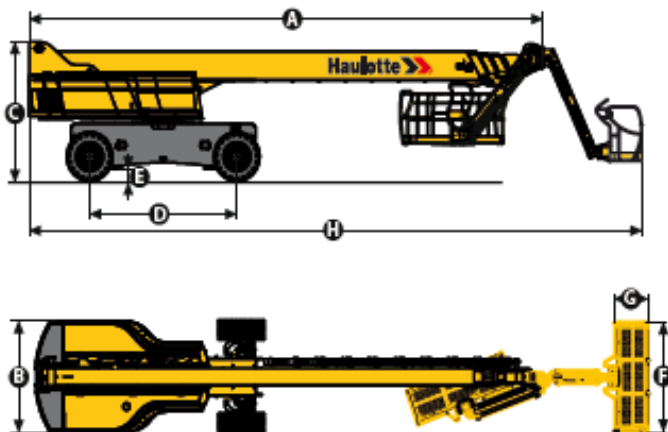


STANDARD EQUIPMENT

- 4 Wheel drive and steer
- Front oscillating axle increasing stability on uneven ground
- 2 extendable axles
- Differential wheel lock increasing rough terrain capacity
- Proportional controls enhancing comfort and safety
- 4 simultaneous movements for highest productivity
- Dual load capacity : 230 kg (2 persons) / 450 kg (3 persons)
- Sound and light alarm for tilt and load
- Electric pump system and emergency descent
- 12 V battery / electrical control system
- Swing out engine tray for ease of maintenance
- Safe to use in winds up to 45 km/h – 28 mph
- Large basket with drop bar entry gate
- Hydrostatic transmission
- Power to platform (Female plug in the basket 110W/220V)
- Low fuel level indicator (upper control box)
- Engine pre-heater with light indicator
- Hourmeter
- Tow hooks and lift hooks

OPTIONS AND ACCESSORIES

- On-board 3.3kW generator
- Cold weather kit
- Alarm package (motion alarm and travel alarm)
- Travel alarm
- Rotating beacon
- 15W flashing light
- Air line to platform
- 65W platform working light
- Hydraulic oil cooler
- Hydraulic oil in tank and circuit for warm countries
- Biodegradable hydraulic oil
- Automatic Overspeed Air Shutdown Valve (Electric one-way valve, flame arrestor, spark arrestor)
- Upper control box protection cover (transparent plastic and fixed place)
- Battery cut-off
- Fuel pre-filter
- Cap with key for diesel tank



31232848 - New technical document - We reserve the right to modify the technical characteristics of this document without notice - 4/21/2013

